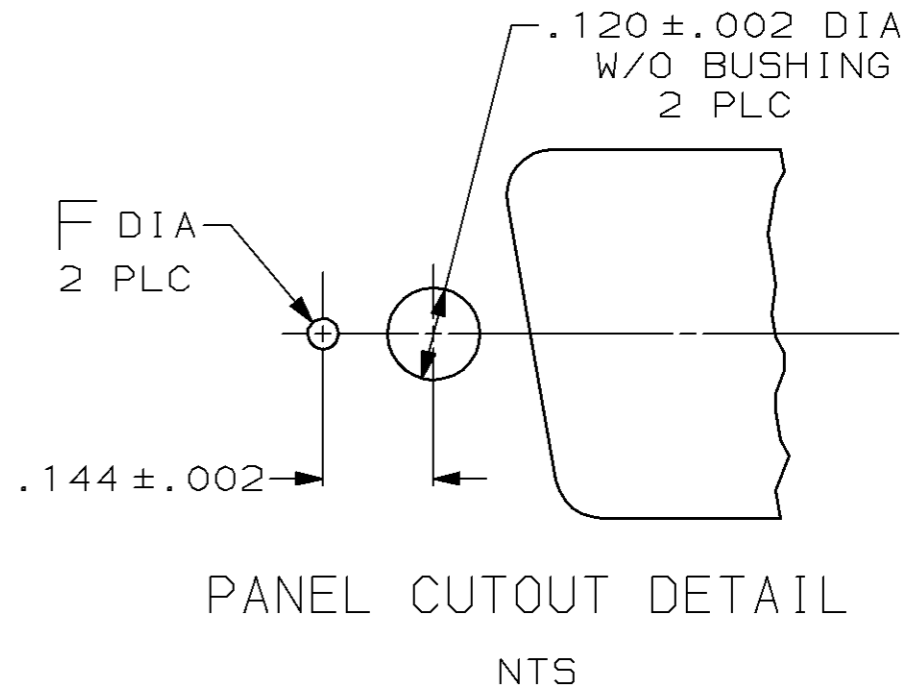
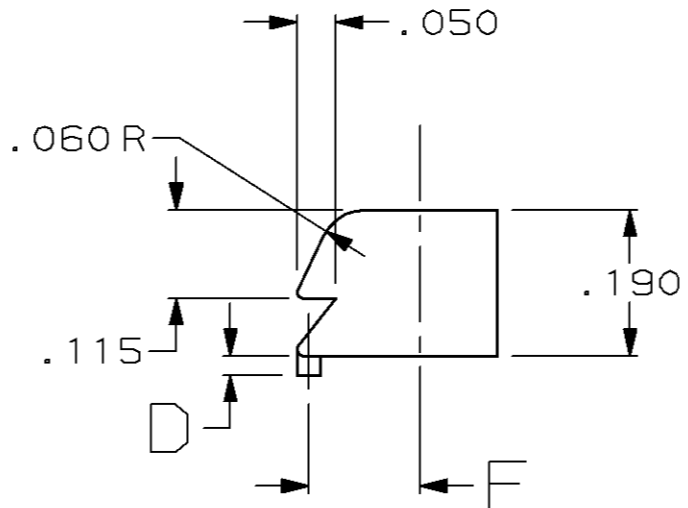
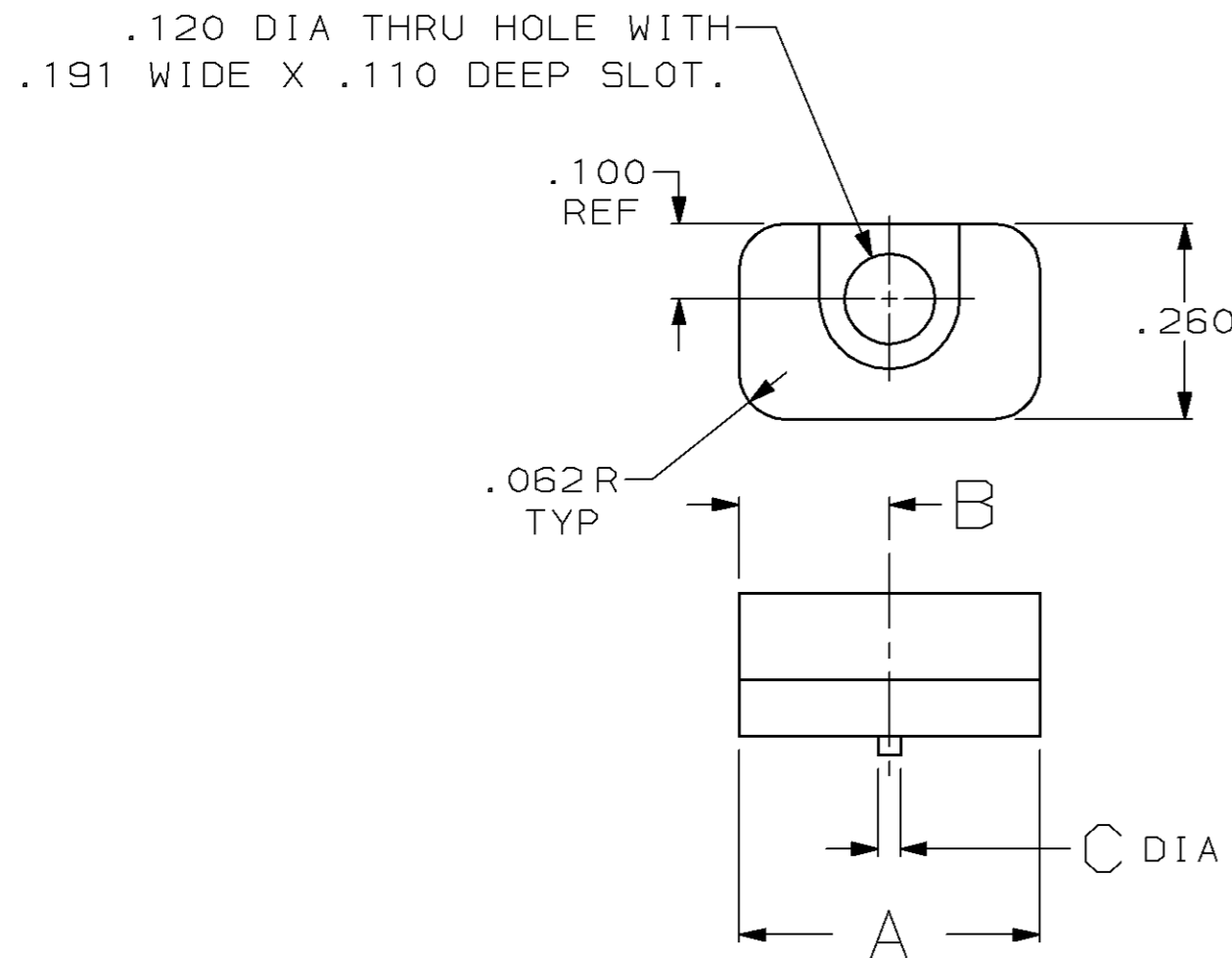


THIS DRAWING IS UNPUBLISHED. RELEASED FOR PUBLICATION, 19 .
 © COPYRIGHT 19 BY AMP INCORPORATED. ALL INTERNATIONAL RIGHTS RESERVED.

| LOC | DIST | P | F | REVISIONS | | | | |
|-----|------|---|---|-----------|-----|---------------------------|-----------|------|
| | | | | ZONE | LTR | DESCRIPTION | DATE | APPD |
| BD | 48 | | | | C | REDRAWN ON CAD | 4-9-90 | - |
| | | | | | D | OBS -6 PER EC 0420-145-96 | 12 SEP 97 | SB |



| | | | | | | | | | |
|----------|------|------|------|------|-----------------|----------|------|------|-------------|
| OBSOLETE | .050 | .136 | .055 | .045 | BULK PACKAGED | 2 | .200 | .400 | 745245-7 |
| OBSOLETE | .040 | .144 | .025 | .030 | BULK PACKAGED | 2 | .265 | .530 | 745245-6 |
| | .040 | .144 | .025 | .030 | ONE KIT PER BAG | 2 | .265 | .530 | 745245-5 |
| | | | | | BULK PACKAGED | 2 | .200 | .400 | 745245-3 |
| | | | | | ONE KIT PER BAG | 2 | .200 | .400 | 745245-2 |
| | F | E | D | C | PACKAGING | QUANTITY | B | A | PART NUMBER |

| | | | | |
|---|----------------------------|--|------------------------------------|------------------|
| DO NOT SCALE PRINT, UNLESS SPECIFIED DIMENSIONS IN INCHES TOLERANCES ON: 2 PLC DEC ± - 3 PLC DEC ± .005 ANGLES ± - | DR 4-9-90 J GALLUCCI BG | AMP AMP INCORPORATED Harrisburg, Pa. 17105 | | |
| | CHK 6-15-90 W. LENKER | | | |
| | MATERIAL ZINC | APPD 7-11-90 J. WESTMAN | NAME LATCHING BLOCK, AMPLIMITE™ | |
| | FINISH - | APPD 7-16-90 J. ASSINI | SIZE B | FSCM NO 00779 |
| | PRODUCT SPEC - | SCALE 4:1 | | SHEET 1 OF 1 |
| | APPLICATION SPEC - | | | |
| | WEIGHT - | | | |